



Miller Diving® 400 Diving Helmet

Loc. #	Part #	Description
1	945-001	Helmet Shell, Black
	960-384	Helmet Shell, Polished
2	930-065	Manifold Nut,
3	905-027	Muffler, Free flow
4	920-002	Face Plate
5	960-003	Face Ring
6	930-017	Screw
7	930-075	Nut, Slotted
8	930-012	Washer
9	950-076	Nose Device Housing
10	510-008	O-ring
11	950-078	Packing Nut, Nose Device
12	550-252	Knob, Nose Device
13	930-047	Screw
14	950-100	Retainer Plate, Side Exhaust
15	910-101	O-ring
16	950-102	Side Exhaust Body
17	910-103	O-ring
18	910-030	Exhaust Valve
19	930-104	Clip Ring
20	950-105	Exhaust Handle
21	905-133	Side Exhaust Assembly
22	945-080	Regulator Body, (Black)
	960-304	Regulator Body, (Polished)
23	550-060	Piston
24	535-807	Spring Set
25	550-059	Spacer
26	550-058	Adjustment Shaft
27	520-032	Washer, Teflon®
28	510-011	O-ring
29	950-097	Packing Nut, Reg. Adj,
30	530-601	Roll Pin
31	950-098	Adjustment Knob
32	960-046	Regulator Cover (Black)
	960-414	Regulator Cover (Polished)
33	930-047	Screw

Loc. #	Part #	Description
34	950-105	Exhaust Handle
35	930-104	Clip Ring
36	910-030	Exhaust Valve
37	910-103	O-ring
38	910-059	Deflector
39	910-081	Diaphragm
40	530-303	Nut, Lock
41	550-052	Spacer
42	545-038	Roller Lever
43	530-506	Washer, S.S.
44	530-505	Washer, Brass
45	535-804	Spring
46	545-026	Inlet Valve
47	510-014	O-ring
48	950-082	Inlet Seat
49	910-058	O-ring
50	950-057	Retainer Plate, Regulator
51	910-073	O-ring
52	950-072	Mount Tube, Oral Nasal
53	930-017	Screw
54	905-140	Regulator Assembly (painted)
	905-340	Regulator Assembly (polished)
55	915-036	Microphone / Earphone
56	915-034	Speaker Wire Assembly
57	515-035	Binding Post
58	905-055	Demand Tube & Guard
59	930-112	Screw
60	930-423	Washer
61	905-323	Chin Strap
62	930-017	Screw
63	960-016	Neck Ring, Lower
64	910-018	Neck Seal, Neoprene
65	960-015	Neck Ring, Upper, Tapped
66	905-135	Neck Ring Assembly
67	960-006	Cam Handle

Loc. #	Part #	Description
68	930-068	Nut
69	930-012	Washer
70	930-011	Screw
71	955-111	Elbow
71a	910-024	O-ring
72	945-064	Manifold Valve Body
73	950-063	Valve Stem, Manifold Valve
74	920-062	Teflon® Packing, Manifold Valve
75	950-060	Packing Nut, Manifold Valve
76	960-025	Handle, Manifold Valve
77	930-017	Screw
78	930-061	Washer
79	905-134	Manifold Valve Assembly
80	510-483	O-ring
81		Body
82		Spring
83		Poppet
84		O-ring
85		O-ring
86		Wiper
87		Seat
88	555-117	Adapter
89	555-195	One Way
90	505-060	One Way
91	950-348	Valve Body
92	550-138	Stem
93	540-095	Washer
94	520-024	Packing
95	550-254	Packing Nut
96	520-525	Flex Knob, Emergency
97	535-802	Spring
98	550-250	Lock Nut
99	905-348	Emergency Valve Assembly
100	930-017	Screw
101	950-110	Band Button

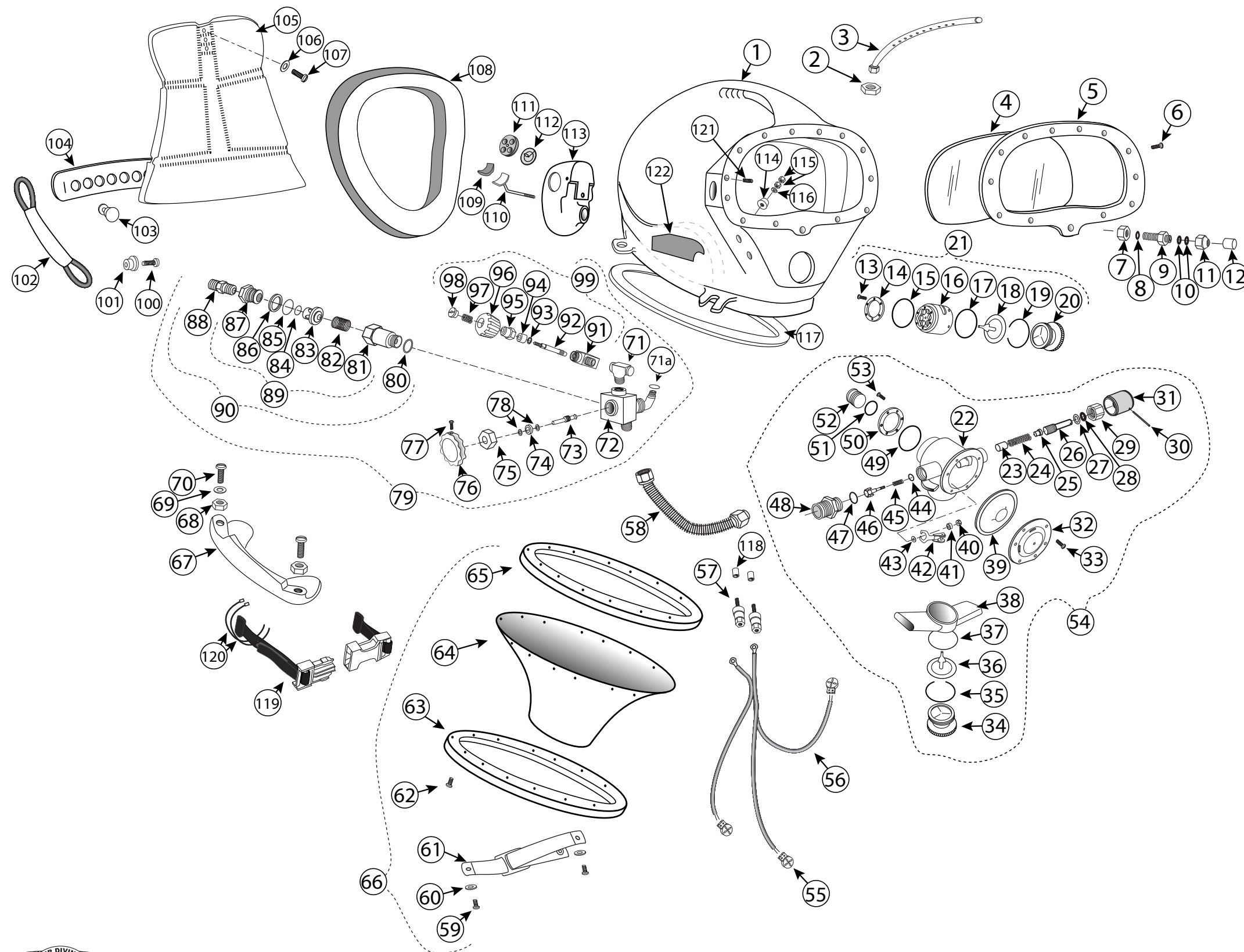
Loc. #	Part #	Description
102	905-108	Neck Band
103	950-107	Adjustment Button
104	910-410	Adjustment Strap
105	910-406	Head Harness
106	930-109	Washer
107	930-106	Screw
108	910-005	Face Seal
109	510-575	Nose Device Pad
110	545-015	Nose Device
111	950-369	Valve Body, Oral Nasal
112	510-552	Valve Oral Nasal
113	910-070	Oral Nasal
114	915-447	Standoff
115	530-308	Nut
116	530-525	Washer
117	920-014	Neck Ring Gasket
118	915-445	Insulation Sleeve
119	905-175	Positive Locking Strap Assembly
120	520-039	Tie Wrap
121	930-285	Set Screw
122	915-040	Earphone Mount, Right
Not Shown	915-038	Earphone Mount, Left



Miller Diving, Inc.® 1430 Jason Way, Santa Maria, CA 93455
 Phone: 805/928-7772 Fax: 805/928-0342
www.millerdiving.com e-mail: sales@millerdiving.com



Miller Diving[®] 400 Diving Helmet



Product Changes

Following publication of this drawing, certain changes in standard equipment, options, prices and the like may have occurred which would not be included in these pages. Your Authorized Miller dealer is your best source for up-to-date information on any of these products. © Miller Diving, Inc. reserves the right to change product specifications at any time without incurring obligations.

⚠ CAUTION

Use only Kirby Morgan original replacement parts. The use of other manufacturers' parts will interfere with the performance characteristics of your life support equipment and may jeopardize your safety. Additionally, any substitutions will void any warranties offered by KMDSI. When ordering spares, always insist on Kirby Morgan original parts.



Miller Diving, Inc.[®] 1430 Jason Way, Santa Maria, CA 93455
 Phone: 805/928-7772 Fax: 805/928-0342
www.millerdiving.com e-mail: sales@millerdiving.com