

# Miller Diving Equipment

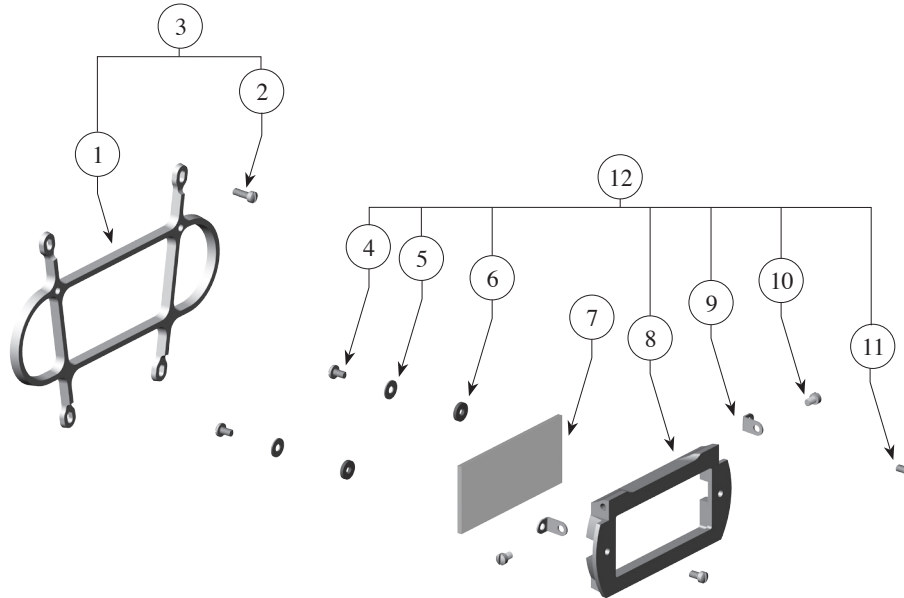
1430 Jason Way Santa Maria, California 93455

Phone: 805/928-7772 Fax: 805/928-0342

www.millerdiving.com email: info@millerdiving.com

## Part #905-138

### Miller 400 Welding Shield Assembly



Loc. #	Description	Part #	Qty.
4	Screw	330-026	2
5	Washer, Chin Strap Mount	930-423	2
6	Rubber Washer	930-117	2
7	Lens	525-405, 406, 407	(sold separately)
8	Weld Shield	960-114	1
9	Hinge	940-115	2
10	Screw	930-116	2
11	Screw	930-047	2
12	Weld Shield Assembly	905-138	

**Note:** To use the Weld Shield Assembly P/N 905-138 it is necessary to have a Face Guard Assembly P/N 905-137 on the helmet. The Weld Shield Assembly Kit does not include the Face Guard Assembly (#1-3) or welding lens (#7).

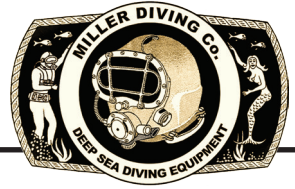
1. Remove one screw and washer unit, #4 P/N 330-026 & #6 P/N 930-117, from the back of the weld shield #8 P/N 960-114. Loosen the second screw, washer unit and insert the desired welding lens into the recess in the weld shield. Replace the screw and washer and very carefully tighten both screws until just placing gentle pressure on the weld lens. DO NOT over tighten.

# Miller Diving Equipment

1430 Jason Way Santa Maria, California 93455

Phone: 805/928-7772 Fax: 805/928-0342

www.millerdiving.com email: info@millerdiving.com



2. Position the weld shield over the face guard and align the holes in the weld shield hinges, #9 P/N 940-115, with the holes in the face guard.
3. Install the two screws, #11 P/N 930-047, through the hinge and into the face guard and tighten securely
4. Tension the 2 screws, #10 P/N 930-116, to allow the proper pivoting of the weld shield.